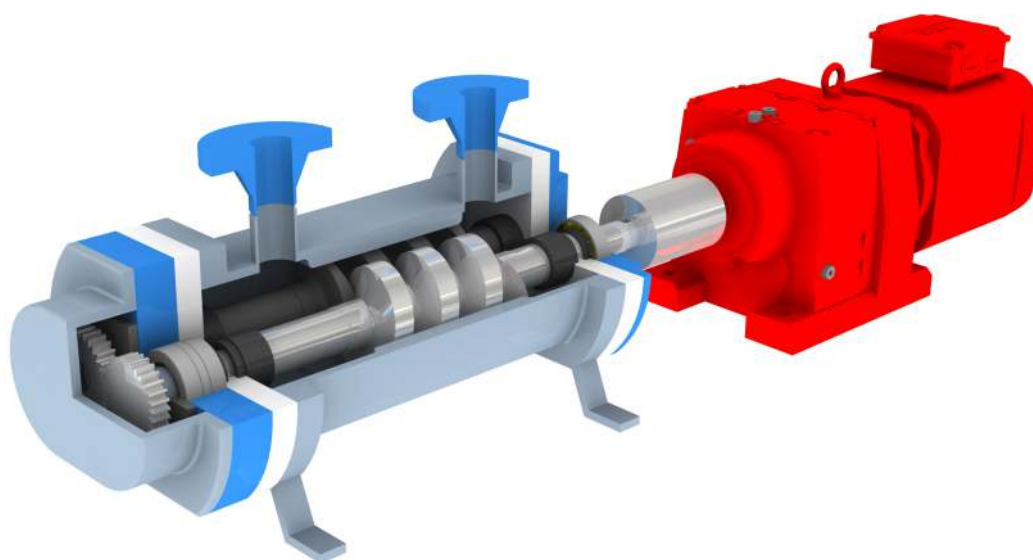


BoMax ePDP NL-series

ENHANCED POSITIVE DISPLACEMENT PUMP



revolutionary, sustainable design
high performance
multipurpose
low maintenance



BoMax ePDP NL-series

ENHANCED POSITIVE DISPLACEMENT PUMP

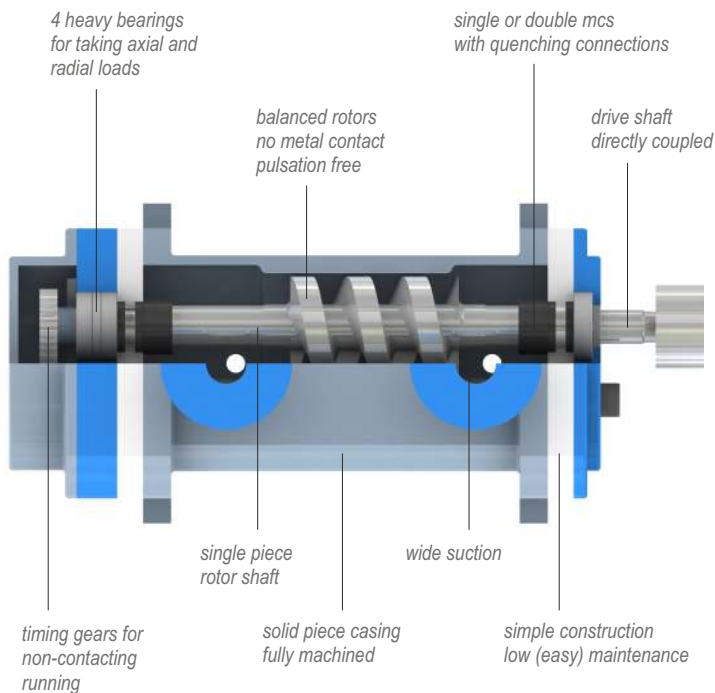


A versatile pump the industry has been waiting for

With its entirely newly developed ePDP NL-series, BoMax group offers the industry a sustainable multipurpose positive displacement pump, surpassing the competition convincingly. Thanks to an innovative design each model from the ePDP series delivers unprecedented performance, combined with a substantially longer lifetime and a very low need for maintenance. This makes the BoMax ePDP NL-series a very cost-effective investment for numerous applications within the food industry, petrochemical industry, oil and gas industry and any other industry where substances with a viscosity of up to 100.000 cST need to be displaced without structural changes.

The BoMax ePDP NL-series positive displacement pumps are capable of handling virtually any fluid, extremely viscous, including solids or pure liquid. Because of their unique construction emulsion does not occur, so substances leave the pump house exactly as they enter.

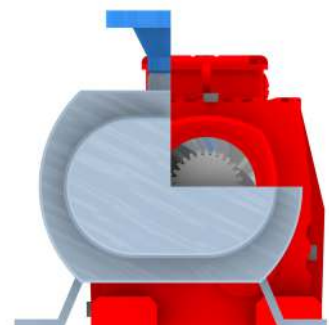
Not only robustness, performance and low maintenance requirements make these versatile single or double entry, two rotor screw pumps so worthwhile for a vast number of applications, its also their accuracy and great reliability making them economically attractive. Moreover the pumps are available in different sizes and capacities, and can even be produced according to customer specifications, where even the pump house and inner parts can be carried out in various materials.

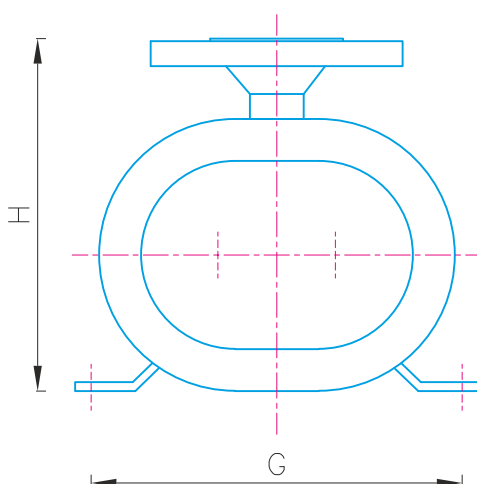
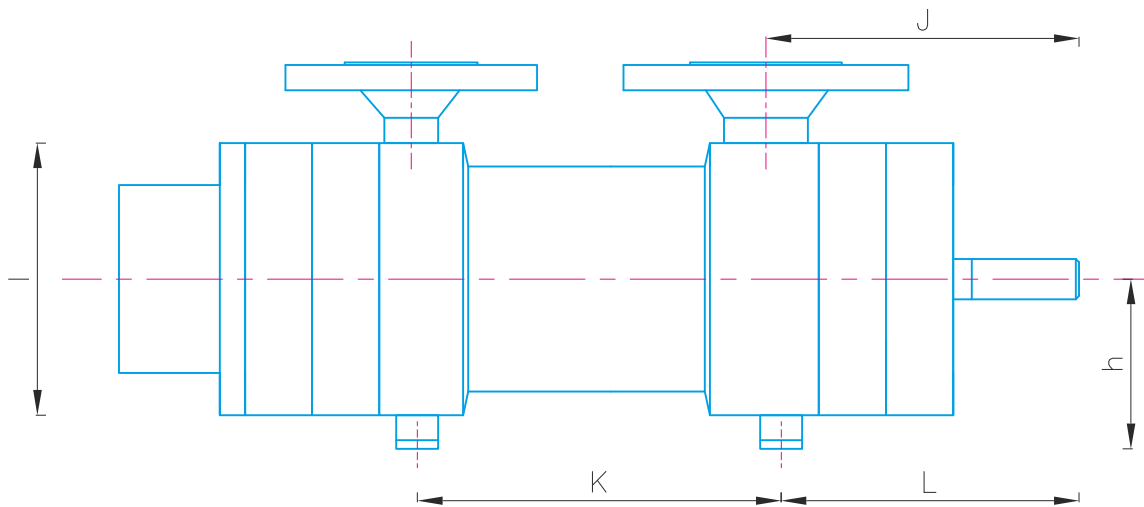
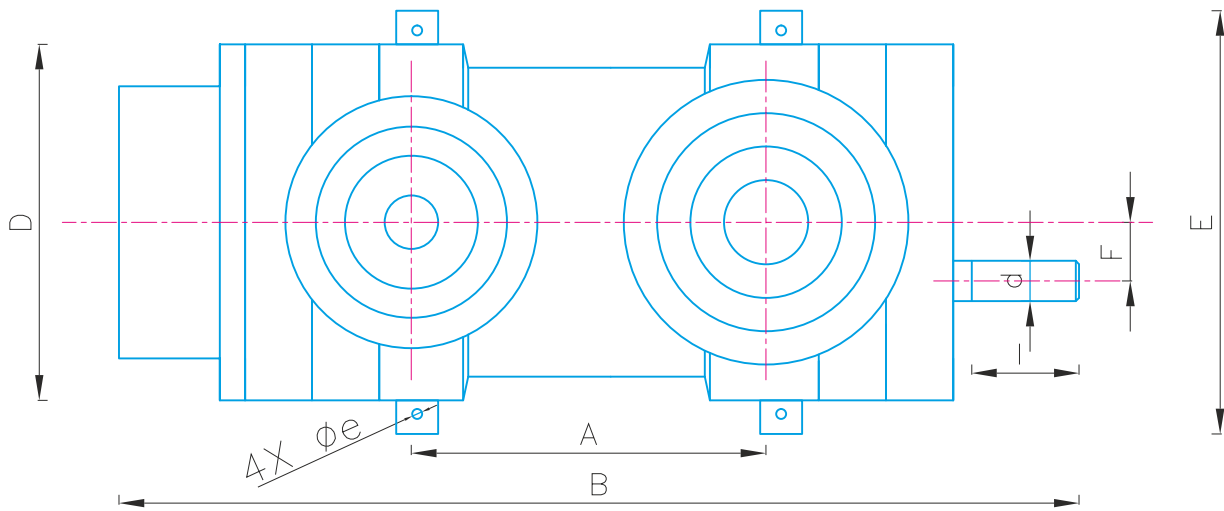


Product key features

- ✓ suitable for virtually all viscosities
- ✓ high suction capacity (up to 9 mwc)
- ✓ no abrasion
- ✓ no emulsion
- ✓ no pulsation
- ✓ no shaft deflection
- ✓ self priming
- ✓ rigid bearings at both ends
- ✓ capable of running dry / gas displacement
- ✓ displacement of solid parts up to 10 mm
- ✓ no internal contacting components
- ✓ applicable for pumping corrosive and highly delicate substances
- ✓ low maintenance
- ✓ available in different sizes and capacities or according to custom specifications
- ✓ both pump housing and inner parts available in various materials, like stainless steel, aluminium, hardened plastics

The BoMax ePDP NL-series positive displacement pumps have been entirely developed in The Netherlands, where they are manufactured in accordance with the highest quality standards.





- Options**
- Clockwise or counter-clockwise rotation
 - Flange position: top/side, top/top, side/side
 - Flange standard to ANSI, ISO or other

| | SUCTION | DISCHARGE |
|------------|----------|-----------|
| MODEL | DIN 2633 | DIN 2633 |
| ePDP NL-01 | Ø 32 | Ø 25 |
| ePDP NL-02 | Ø 50 | Ø 32 |
| ePDP NL-03 | Ø 100 | Ø 80 |
| ePDP NL-04 | Ø 200 | Ø 150 |

SINGLE FLOW DESIGN

All dimensions in mm

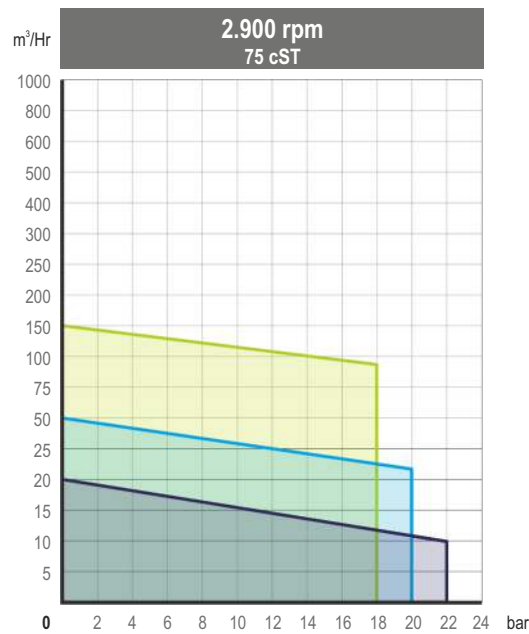
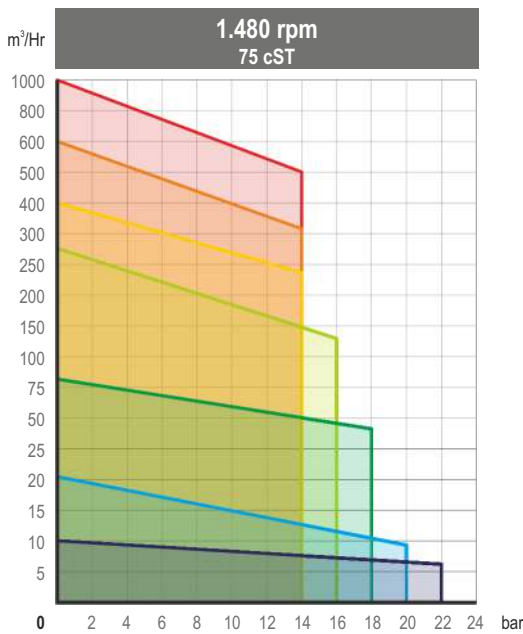
| MODEL | A | B | D | E | F | G | H | I | J | K | L | e | d | h | l |
|------------|-----|------|-----|-----|------|-----|-----|-----|-----|-----|-----|------|------|-----|-----|
| ePDP NL-01 | 170 | 475 | 161 | 200 | 26 | 166 | 195 | 108 | 150 | 190 | 150 | Ø 10 | Ø 18 | 75 | 52 |
| ePDP NL-02 | 210 | 558 | 212 | 232 | 35 | 204 | 240 | 142 | 168 | 215 | 156 | Ø 12 | Ø 24 | 94 | 64 |
| ePDP NL-03 | 340 | 940 | 334 | 340 | 51 | 300 | 370 | 232 | 320 | 360 | 305 | Ø 14 | Ø 38 | 136 | 120 |
| ePDP NL-04 | 590 | 1500 | 480 | 520 | 82,5 | 460 | 460 | 315 | 390 | 640 | 340 | Ø 16 | Ø 70 | 200 | 120 |



BoMax group
Rumpsterweg 14a
NL-3981 AK Bunnik
The Netherlands

t: +31 (0)30 65 63 609

e: info@mbomax.nl
i: bomaxgroup.com



Performance curves of the BoMax ePDP NL-series, powered by 1.480 rpm and 2.900 rpm electric motors, based on processing fluids with a viscosity of 75 cSt.

- ePDP NL-07
- ePDP NL-06
- ePDP NL-05
- ePDP NL-04
- ePDP NL-03
- ePDP NL-02
- ePDP NL-01

About BoMax group

Lloyd's certified

BoMax group arose from Lloyd's certified Van der Leeden steel construction, which was established in 1981, and BoMax Machine Factory, both located in Bunnik, in The Netherlands. BoMax group holds a wealth of knowledge and valuable experience in the field of steel structures and mechanical engineering.

ASME standard

Demanding customers from all over the world have found their way to our very well equipped and dedicated company, either directly or

advised by others, for very different projects. BoMax group only delivers premium quality products and semi-finished products, according to the international ASME standard.

Precision

BoMax group manufacturing includes positive displacement pumps, industrial pump houses, water tanks, stair cases, gear and many types of steel structures. Everything is produced according to thorough and detailed specifications. All being constructed with utmost precision.

Want to know what we can do for you?

We would be happy to guide you around the plant whilst informing you about our core disciplines, translating them into both universal industrial products as well as specific applications, dedicated to any particular business environment.

Welcome to BoMax group!